

PSWC NEWSLETTER

Jan 1 – March 4, 2015 • *Annual*

Member Show entries

April 1 to May 1 • Annual Member

Show, online

March 5 - 10 • Awards judging,

Member Show; Claire Verbiest, judge

March 18 • Notifications for Member

Show sent

Jan. 1 - April 22, 2015 • Entries, *29th*

Annual Pastels USA International

May 1 • Notifications for open

show sent

June 10 • Shipping deadline, open show

June 20 • Hand Deliveries, open show

June 23 • Awards Judging, Terri Ford,

awards judge

July 2 to Sept. 13, 2015 • Exhibition

Dates, Pastels USA *Haggin Museum,*
Stockton, Ca.

August 15 • Reception, 1:30 to 3:30

Haggin Museum

September 19 • Pick-up, Pastels USA

(No early removals)

CLARENCE

Letter from the President

Hello PSWC Members,

I wish you all a Happy New Year. May your year be filled with plenty of time to paint and create!

Lots of exciting events are coming your way from PSWC. The first is our Online Membership Show from April 1 to May 1. The entries are open at Online Juried Shows with a deadline of March 4. We are proud to have Claire Verbiest as our Juror and Judge.

Next will be our annual international exhibit, Pastels USA. Entries opened Jan. 1, with a deadline of April 22. Terri Ford is the Judge of Awards; Jurors of Selection are Vianna Szabo, Mike Beeman and Alain Picard, all well-known, highly credible artists. The exhibit will be held at the wonderful Haggin Museum. During the exhibit we will be having a one day workshop with Terri Ford. How exciting is that!

There are more details in the body of the newsletter so check it out and enter both exhibits. Remember you don't have a chance until you take one.

Now I would like to welcome Russell Frank as your new PSWC President. Russell brings a lot to our society with a background in business, travel and of course art. He not only creates beautiful pastels but is also excellent at making great pottery items. He has been a big support to me in his role as Vice President. Many of our new members already know of him because he sends each new member a message of welcome when they join. Russell is a natural leader, and I am now privileged to continue working with him as Vice President.

Thank you for being a great society of artists. It has been a pleasure and honor being your President.

Tina Moore — PSWC Outgoing President

Incoming President's Message

I am humbled to be a part of such a wonderful organization as the Pastel Society of the West Coast. Tina Moore has done a great job as president for all of the years that I have been involved with the board of directors. I originally joined PSWC in 2008. I saw that the board did all of the work of the society, as the members are spread out, not just state-wide but coast to coast. Basically, if the board does not do it, it does not get done.

I admired their dedication. At the first meeting I attended, Tina was president but was also taking notes because we were without a secretary. I just started to take notes of the meeting, too, and when asked what role I wanted to play in assisting the board, I held up the notes of the meeting. I became secretary for several years and then progressed to vice president. After more than six years as president, Tina was ready for a break. This year I agreed to take on that responsibility. Tina will be vice president and I will lean on her as well as other members of the board for their valued assistance.

(continued on page 3)

Drawing and Building Value Patterns

The strength of value masses is more important, in my estimation, to the power of your work than any other factor. To understand the critical nature of value masses in your work, you may find this series of exercises just what the doctor ordered. Purcell's book, *Drawing With Your Artist's Brain*, takes readers through the process of 1) recognizing the shape of focal, dominant masses in others' works, to help you control them in your own, and 2) to also recognize and learn to control the unity of subordinate shapes within a larger mass by controlling values.

Here's the link to either version of his drawing book:

http://www.amazon.com/s/ref=nb_sb_noss?url=search-alias%3Dstripbooks&field-keywords=Painting+and+Drawing+%2B+Purcell

You will need: 6B/7B pencils (and 2Bs), kneaded eraser, tracing paper, Carl Purcell's book, my book, and your sketchbook.



©Carl Purcell

Exercise 1: Triangular Shapes (see Purcell, *Drawing*, pp 41-43)

On Pages 41-43, Purcell, we see examples of using geometric form to analyze the basic patterns involved in a composition.

With a few art-collector magazines, your tracing paper and pencil. Find three or more paintings in the magazines with major focal patterns which, if simplified, are triangular. With the tracing paper,

- 1) Draw that triangle shape over the image, whatever dimensions are required.
- 2) In each, draw a plumb line from the apex of the triangle to the base.
- 3) Draw sight lines (at least three: vertical, horizontal and/or diagonal to establish relationships within the form.)

Side note: Observe what those lines tell you. What do they say about distribution of balance (apparent weight), linear patterns, interest?

Exercise 2: Rectangular shapes

Look for three rectangular shapes and diagnose them in the same manner. There will be no apex, but draw a plumb line from top to bottom, near center of the shape (not of the margins of the painting.)

Side note: Relative to the dominant rectangular shape, where within the margins of the painting as a whole does each vertical plumb line fall? Center, center left, center far left, or reverse? What on the left or right of that plumb line justifies its position?

Keep in mind as you work that the lightest values within in the light masses of a composition should never be as dark as the lightest portions of the shadow masses. Value control is up to you.

Exercise 3: Taking your drawing further.

- a. With a few of photos or art magazines, at your easel or on the table, as space is available, using your tracing paper, and the **SIDE** of your 6B pencil, not the tip!!!, establish the mid to dark value patterns we discussed last week over the images. **No details**, please. Don't define any edges.
- b. Work over those patterns to **establish 3 values** – in your sketch, light presents as “white”, plus mid-tones and dark value patterns.
- c. See what emerges as you work over these images. **Are shadow patterns connected?** If not, can you see ways in which you can adapt to connect them? Can you bridge, as Purcell describes it on p. 107, the various patterns? How are you doing it? **Consider this a puzzle** or a mountain climb, whatever it takes to motivates you. **Take risks** to understand this, and it will open up a whole new way of seeing and of creating composition.
- d. Now, put the images and tracing paper aside. Use blank drawing paper. Create six or eight small boxes on your drawing book page. Be sure you leave space between the boxes, not cheek by jowl. You need to see them as individual creations. Start with a light line above or below center across your sketchbook page horizontally, and then another running to left or right of center vertically.
- e. Then build abstract shapes with the side of that pencil. Make it interesting. And make the horizontal line connect with the other side of the page. Shapes can connect, or just nearly connect.
- f. Now do something interesting with the vertical line. Focus on interesting shapes. Carefully avoid representing any “thing.”
- g. Experiment with some of the compositional schemes from my book, *A Painter's Guide to Design and Composition*. Still using abstract value patterns, in small (2x3, 2x2, etc.) rectangle formats, build patterns with converging lines, an “H” pattern, an “L” pattern, an “S” curve.

If recognizable objects or “things” suggest themselves, don't go too far defining. Let them remain as mere suggestions. The object here is seeing value patterns, and “things” can get in the way.

If you'd like more help with masses and with drawing, I can think of no better tool to learn with than Carl Purcell's books on drawing.

Incoming President's Message
(continued from page 1)

My main goal has been, and will continue to be, value for our members. I will continue to try and come up with ideas that recognize and reward our members of all levels, such as demonstrations, paint-outs and awards at both levels in the two Member Shows. I began by writing a welcome email to new members. A new member just wrote back and stated that she has belonged to art organizations for 40 years, and no one has ever welcomed her to their group before. I will continue this effort in the future. We can expand our scope to members in different areas of the country by promoting plein air paint outs that they can set up. To enable these events, we will send out e-blasts to the membership who can let their friends know the place, date and time. If you are interested in being a part of this endeavor, please let me know.

I currently live in the Giant Sequoia National Monument. We moved from a good-sized house in Elk Grove, CA to a 600 sq. ft. cabin, where my pastel painting studio is in the loft of our cabin. I'm having a shop built so I can continue to work in ceramics and woodworking. Debra and I have three children and four grandchildren.

To all of the members of the board, past and present, thank you for your unselfish service to the artists who make up Pastel Society of the West Coast. To all of the members, thank you for continuing your support of our society. With the valuable assistance from the board, our society will continue to grow and be a source of inspiration to those that work in pastel.

Russell Frank

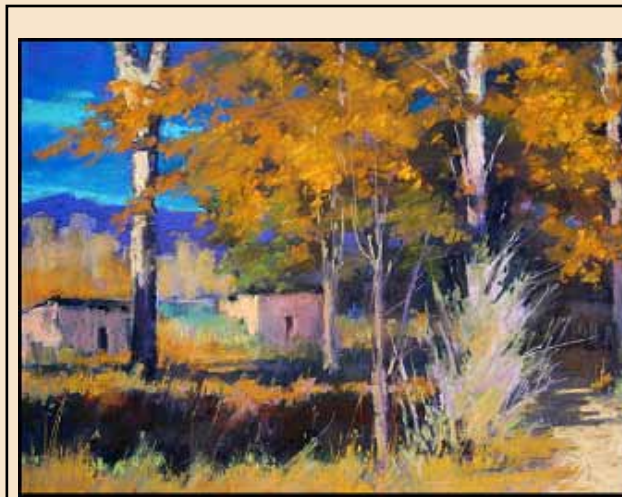
PSWC President
Pastel Society of the West Coast
559-542-2289

Pastels USA 29th Pastels USA 2015
Annual International Open Show
July 2 to Sept. 13, 2015



At the beautiful, prestigious
Haggin Museum

1201 N Pershing Ave, Stockton, CA
95203



Juror of Awards
Terri Ford

“a frequent award winner at the Carmel Art Festival Plein Air Event. Her works have been published widely in *Pastel Journal*, *Plein Air Magazine*, *Fine Art Connoisseur*, *American Art Collector*, *Pratique des Artes* and others.”

“Autumn Shadows” 18x24 Pastel by Terri Ford All contents ©2014 Terri Ford

Pastel Society of America - Master Pastellist
Pastel Society of the West Coast - Distinguished Pastellist
Pastel Society of New Mexico - Distinguished Member
IAPS - Eminent Pastellist

Jurors of Selection: Vianna Szabo, Mike Beeman and Alain Picard

Over \$12,000 in awards

April 22, 2015 deadline; online submission only

Entry Fees: Members -3 for \$40; up to 5 for \$50
Non-members -3 for \$45; up to 5 for \$55

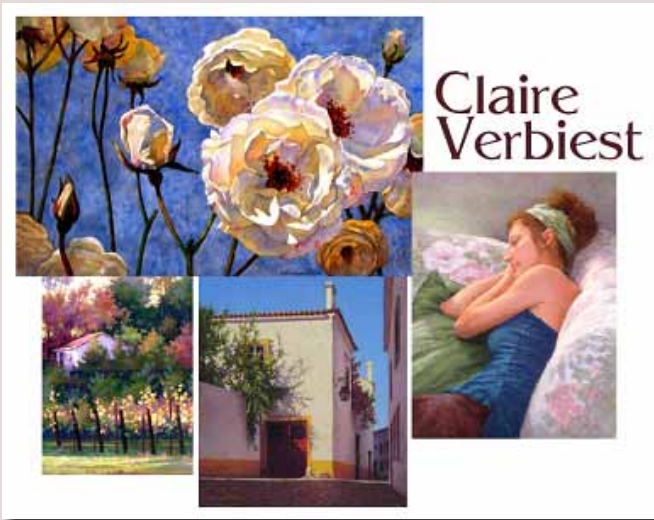
Enter at onlinejuriedshows.com, Jan. 1 to April 22

Our designation as an international exhibition is confirmed every year. This year saw entries from Eschstaett, Bavaria, Germany, Naval moral de la Mata, Spain, and Coldstream, British Columbia, Canada. Past years have seen submissions from virtually all points of the globe.

Exciting News *for all members:*

In the Fall Newsletter, we announced an **Online Juried Membership Show for 2015**. This is great news for most of us, as this means ***we won't have to ship our paintings and/or have them framed.*** Both huge pluses!

Our distinguished juror for this show is Claire Verbiest, a native of Belgium, whose work appears in a score of books and magazines and has been featured in 2007 at solo exhibition at the Triton Museum, where twenty-seven of her works were displayed.



Remember, the deadline to enter this is **March 11, 2015**. The prospectus will be available on Online Juried Shows and the PSWC website by November 2014. This should give you time to paint and

enter your best work. Don't delay entering; you can do so right now.

We hope to have the membership show in a great gallery every other year with the online membership show being held on the alternate years.

Paintings will be ***entered and judged in two separate groups***, one for **Members** and the other for **Signature, DP, and Pastel Laureate** members. Each group will be eligible for the following awards: 1st \$500, 2nd \$300 and 3rd \$200. Best of Show Award, \$750, goes to a painting from either group. As this is this year's Membership Show, 1 Point towards signature status will be awarded if you are a place award winner in the Member group.

Look for more advertising for this show. And – please tell your Pastel friends who are not already PSWC members **to join** so they can take part in this prestigious **Pastel Society of the West Coast Membership Show**. To become a member go to pswc.ws and click on membership for this information.

All accepted works will be displayed both on our website, www.pswc.ws, and on **OnlineJuried Shows.com**.

Again this is an online exhibition. We look forward to your participation.

food *for thought*

To be brilliant artists, we all need the restoration of sound sleep. Recent studies show that if you are “burning the candle at both ends,” it may be more than the candle you are burning.

A recent Prevention Magazine article¹ notes, “Not sleeping kills neurons, shrinks the brain, and leaves trash everywhere. ... People who have trouble sleeping show changes in brain regions important for memory and problem solving.” ... “Using specialized microscopes to observe the brains of sleeping mice [researchers at the University of Rochester Medical Center] discovered

a kind of plumbing system for ridding the brain of unwanted waste. Importantly this cellular trash includes beta-amyloids and other proteins, the dreaded buildup of which is associated with cognitive problems including Alzheimer's disease. The “quick fix” doesn't do it: people who rely on products like Xanax and Valium “have a higher risk for cognitive trouble.”

But all is not lost! Watching what we eat and drink (and watch), getting a good dose of physical activity during the day, some form of meditation, all of those help. “Any

practice in which you close your eyes and focus on breathing will set your mind in the right direction.”

Better sleeping = better painting!

While the Prevention article does not appear online, this one on the same subject looks helpful:

<http://www.bohemian.com/north-bay/beyond-counting-sheep/Content?oid=2562977> - MSS

Prevention Magazine, Nov. 2014, 138-149

Russell Frank

Award winning artist Russell Frank was born in Bakersfield, California. He attended Bakersfield High School, Bakersfield College and Cal State Northridge where he majored in Art, Ceramics and Woodworking. Russell began his unique style of pastel drawings in 1968. He began his own hand thrown pottery business in 1973 and has made many pieces of fine furniture and cabinets. Northern California and Africa provide an abundant resource of material for his pastel paintings of landscape, wildlife and waterfowl. The paintings are done in dry pastel. The realism that he looks for in his work takes approximately one hour per square inch to produce.



First Light, Zinfandel – Russell Frank



Cabernet Fall – Russell Frank

Since 1990, Russell has been a member of Sacramento Potters Group; Northern California Art by Fire and Elk Grove Artists. Russell joined the Pastel Society of the West Coast in 2008. In 2010 he assumed the duties of Secretary, then Vice President and was just elected as President of the Society beginning in 2015.

Russell and his wife, Debra, are now retired and living in the Giant Sequoia National Monument. Together they have three children, Angelina, Seth and Michelle. They also have four grandchildren, Courtney, Erin, Jack and Amelia.

Welcome, Russell, as the new president of PSWC. We know you will do it with dignity, generosity and class. –MSS

member *news*

You hear a lot from your editor on composition. Here is another voice, that of Ian Roberts, author of *Mastering Composition* (NorthLight):

All art forms have the need for composition, or structure. Think of a musician playing a Bach fugue. He is conforming to a very specific arrangement and to the rules of harmonics. A writer, to syntax and grammar. For a painter, it is the visual dynamics of contrasts on a picture plane. Those dynamics function whether or not you believe them, see them or want them to, and they affect the success of every painting you make.



Engaging composition does not appear miraculously at the end when you are putting the finishing touches on the painting. Strong compositions are built in considered steps right from the beginning.

John Carlson: Don't be afraid that too much labor over a composition will kill the spontaneity. (In fact, it will do just the reverse—it will liberate you to paint freely and convincingly)
—Margot Schulzke)

Welcome to New Members

Donna Allen	Seattle WA
Barbara Arrighi	Mill Valley, CA
Elaine Aye	West Linn, OR
Deborah Breedon	Santa Barbara, CA
Josef Caro	Carmel, IN
Dedrian Clark	Bow, WA
Heather Coen	Gilbert, AZ
Patricia Cook	Redding, CA
Elizabeth Cooper	Golden, CO
Bre Crowell	Charlotte, NC
Jane Ditri	Lake Leelanau, MI
Pat Edwards	Tahoe Vista, CA
Judy Felsen	Albuquerque, NM
Sharon Frey	Apache Junction, AZ
Cathleen Guerrini	Novato, CA
Lourdes Hadlock	Burbank, CA
Carol Haywood	Sunnyvale, CA
Cris Horne	Dallas, GA
Sabrina Hill	San Jose, CA
Lise Hoffmann-McCabe	Bend, OR
Beryl Hovey	Rancho Murieta, CA
Sandra Jennings-Jones	Woodland, CA
Steven Lemke	Roseville, CA
Alane Levinsohn	Shadow Hills, CA
Margi Lucena	Socorro, NM
Marilyn Malloy	Eagle Point, OR
Diane Mann	Sherman Oaks, CA
Jeannie Myers	Newbury Park, CA
Pat Moretti	Felton, CA
Ann Nunziata	Napa, CA
Stacey Nussbaum	San Jose, CA
Denice Peters	Denison, IA
Anita Plaks	Escondido, CA
Jayne Quig	Vashon, WA
Lind Sheppard	Beaufort, SC
Halcyon Teed	San Francisco, CA
Nori Thorne	Sedona, AZ
Susan Tremaine	Pleasanton, CA
Carol Wilder	Mt. Shasta, CA
Natasha Witt	Davis, CA

IMPORTANT MEMBERSHIP NEWS; PLEASE READ CAREFULLY, THANKS.

2015 Membership Dues were due January 1. To pay these dues, go to the PSWC website and under the tab "Membership" complete the document, and pay by PayPal or check. Contact Willo Balfrey at wbfalfrey@cot.net if you are uncertain if your dues are paid for 2015. New Membership cards will be sent out after dues payment is received. Please send dues payments to:

PSWC

David Kalbach, Treasurer
7251 Baldwin Dam Rd.
Folsom, CA 95630

\$30.00 General Membership
\$40.00 for Signature/DP Membership

If your email address has changed, please notify the Membership Chair at wbfalfrey@cot.net

SEND MEMBERSHIP INQUIRIES TO:

Willo Balfrey, Membership Chair
wbfalfrey@cot.net
530-938-2342



PSWC's new partnership with Plein Air Magazine is stirring interest across the country. The influence and popularity of the pastel medium is expanding and with the international stature of PSWC are together making this possible. Details will be announced as events unfold, but in the meantime, PSWC members are able to avail themselves of the early bird discount for the 2015 Plein Air Convention at Monterey, April 15-17 2015. See below.*

The Plein Air Convention and PSWC are teaming up.....

If you're going to the Plein Air Convention in Monterey April 13-17, 2015, please stop by our booth in the Pastel Track room and take a few minutes to fill out our survey. This is a chance to invite non-members to sign up. So bring your friends; we look forward to meeting you. While you're there, please make sure you pick up the latest Pastels USA show catalog. *Deadline for the early bird discount is Feb 14 2105.

PSWC Members who are demonstrating or speaking include Terri Ford, Albert Handell, Kim Lordier, Clark Mitchell and Elizabeth Mowry. PSWC is delighted and honored to be so well represented at the convention.

I look forward to meeting you,
Linda Roemisch

Full info: <http://streamlinepublishing.com/s/product/4th-annual-plein-air-convention-2015-2/>

Congratulations! As always, many impressive accomplishments below – read on. The increasing national recognition and professional stature of our members is well demonstrated. Please note: To save volunteer hours, **Only items submitted to our Member News editor Lisa Fricker, at lisa@lisafriker.com, will be published.** See other information at the end of this column. Thank you for your cooperation.

WILLO BALFREY received notice that she has achieved Master Circle status at IAPS and will receive the gold medallion at the 2015 Convention in Albuquerque, NM.

LISA FRICKER is excited to be putting the finishing touches on a new studio she shares with her husband, Tom. Three of her paintings are now installed at Denver's new Exempla St. Joseph Hospital, which held its Open House art tour 12/13/14. Lisa's portrait of Tom was awarded an Honorable Mention in Oil Painters of America's Fall Online Showcase, and she also participated in the National Oil and Acrylic Painters' Society's Online International Fall exhibit with her painting "Reason".



Reason, by Lisa Fricker

SUSAN GOODMUNDSON, our PSWC Member Show Chair, won second in the Crocker - Kinsley competition, a huge accomplishment. Her painting will hang in the Crocker Art Museum March thru May. There were 1300 entries. 75 were chosen to show at the Blue Line Gallery in Roseville, CA, and six were chosen from among them to hang at the Crocker. Susan says, "I was so thrilled."



Contemplation, Susan Goodmundson

JIMMIE CLAIRE GRANN recently won a Best of Show for her portrait "Winter's Wonder" at the Sierra Pastel Society Show. The SPS show was held at the EDAC, Fausel House, in Placerville, CA from November 7 - December 5. There were 43 pastel paintings in the annual show.

KATHY HALL'S painting, "Waiting to Pose" was juried into PSA's 42nd annual exhibition Enduring Brilliance in New York, and received the Art du Pastel en France Award. It was also one of 23 selected from that show to be exhibited at the Butler Institute of American Art this winter. Kathy's painting "Map of Years" was awarded Best of Show in the 10th Pastels on High International Exhibition in Carmichael, CA in August. And her painting, "Morning on the Ridge" received the Gerald and Sandra Boyd Award in the Pastels USA Show in October in Morro Bay.



"Waiting to Pose," and "Map of Years," both by Kathy Hall



Tatanka, by Paul M. Harman

PAUL M. HARMAN was pleased to have his painting "Tatanka" juried into the IAPS online Membership Show.

DAVID KALBACH was a featured artist with a 10 page article in the December 2014 issue of *Visual Language Magazine*. Their December issue is on: *Christmas Toys, Trains, and Planes*. You can find the magazine on the web at www.visualanguagemagazine.com --Volume 3, Number 12. (the December 2014 issue). Find David's feature on Pages 130 - 139 which has images of his aviation pastels and watercolors.



Sky Quilt, by David Kalbach

SEPTEMBER MCGEE has been named a member of the prestigious Salmagundi Club in NYC, and was recently juried into three National Exhibitions: Connecticut Pastel Society's 21st annual Renaissance in Pastel Juried Exhibition, Degas Pastel Society's 15th Biennial National Juried Exhibition in Louisiana, and the Pastel Society of the Southwest's 33rd National Juried Exhibition, held in Texas.

DEBBIE WARDROPE is participating in a group pastel show in Danville. The show also features work by PSWC members **LINDA BEACH, MARK MERTENS, RUTH HUSSEY, and PAT SUGGS.** Romantic Expressions in Pastel opens with a reception January 9th from 5-7 p.m. at the Village Theatre Art Gallery in Danville. The gallery is open Wednesday - Friday 12 - 5, Saturday 11 - 3, and one hour prior to all theatre performances. The exhibit runs through February.

We'd like to blow your horn for you! Send your news—email only—to the Member News editor, Lisa Fricker. Only email submissions sent to lisa@lisafriker.com will be published. Items should be in third person (helshe, not I), paragraph format as a news item - using standard 12 point type; no attachments or pdfs, etc. maximum 100 words. Items sent by regular mail will not be included; we are all volunteers. No postcards or flyers, please. April 1, 2015 is the deadline for next issue.

Entry Deadlines

"Pastels only" means the centuries-old medium of pastel, which by virtue of its 400 year-long history requires no adjective. That means no oil pastels accepted. However, where a sponsoring society has used it, we've replaced "soft" with the more descriptive "dry," as is the usage in Belgium and Canada. Due date for entries listed first, if applicable and if supplied.

JAN. 1 – APRIL 22, 2015 – Pastel Society of the West Coast Pastels USA 29th International Annual Open Exhibition, Haggin Museum in Stockton, CA. July 2 to Sept. 13. For help with sizing digital entries: www.OnlineJuriedShows.com/aspx.

JAN 1 – MARCH 4, 2015 – PSWC Annual Member Show entries, OnlineJuriedShows.com for details. To submit entries: Go to onlinejuriedshows.com log on as new artist and submit a password. If you have submitted before, log on as artist and use your password, they will give you a new one if you have forgotten. If you go to the PSWC website, it will direct you to the onlinejuriedshows.com.

MARCH 7, 2015 – Northwest Pastel Society 29th Annual International Open Exhibition, Tacoma, WA, May 9 – June 20 – Judge Michael Chesley Johnson, \$1500 Best of Show, enter online at OnlineJuriedShows.com. Johnson will conduct a 3-day workshop at Gig Harbor.

MARCH 10, 2015, OPENED 1/10/15 – IAPS, OnlineJuriedShows.com, 26th Annual.

APRIL 15, 2015 – Pastel Painters Society of Cape Cod National Open, So. Yarmouth, MA, June 17-July 12, 2015, Marla Baggeta, Tony Allain, jurors. Entries: OnlineJuriedShows.com. \$5,000 in awards.

APRIL 27, 2015, OPENED 12/1/14 – Pastel Society of Colorado 11th Annual Intnatl. Mile High Exhibition. Onlinejuriedshows.com \$8,000 awards. Runs July 12 – Sept. 25, 2015, Liz Haywood-Sullivan judge.



The only way to find out if you are ready for big-time competitions is to enter.

Pointers: Find out who the jurors are; check their websites to see whether your work might be a fit in a show they would select. The best jurors are respected working artists; their "trained eye" can rarely be equaled. Read the submission requirements carefully. Do exactly as instructed.

Last (but definitely not least): Make sure your images or CDs are top quality; poor images guarantee rejection. Images only: no frames, no background visible.

We have all been rejected from shows! If you are rejected from a show, it helps to remember that no juror is the last word on the quality of your work.

scholarship programs

The **Pastel Society of the West Coast** awards \$500 scholarships to graduating high school students entering college and majoring in art. The society is in the process of expanding its Scholarship effort to reach fine art majors already enrolled in an art program at an institution of higher education. Our book and CD sales related to the open show contribute to this effort.

With your continued membership support and with the additions of new members, art students of all ages attending accredited or recognized fine arts schools, and scholarships

for painting workshops with recognized pastel instructors, receive a total of \$1,000 a year from PSWC coffers. We are grateful to be able to provide this amount to deserving students.

Co-chairs for the scholarship program are **David Kalbach** and **Russell Frank**. We deeply appreciate donations from our members directly to the scholarship fund. Special thanks this month to Susan Goodmundsen for her recent donation to that fund.

PSWC Signature artists and Distinguished Pastellists are invited to list classes and workshops in the PSWC newsletters. Please send exact wording to be used, in third person and single paragraph format, please. New listings should be sent in for each calendar year. Workshop fees will not be listed. The words "Workshop Calendar" must appear on the email subject line. Due to the volunteer hours involved, notices sent in display formats will not be posted.

When submitting a listing, instructor's PSWC Signature/Distinguished Pastellist status must be included. To save space and editing time, for listings please assume instructors' signature status. We note only further distinctions such as PSA Hall of Fame or PSWC Distinguished Pastellist or Pastel Laureates™. Please send all workshop notices to newsletter@pswc.us.

CHRISTINE DEBROSKY

www.christinedebrosky.com

REIF ERICKSEN Check his artblog <http://reifsartblog.blogspot.com> for class listings.

TERRI FORD PSWC-DP, IAPS EMINENT PASTELIST, PSA MASTER PASTELIST Terri's workshops focus on creating luminous paintings with deeper, darker, richer under paintings and pure pigment, vibrant light. Visit her website for a complete list of 2105 WORKSHOPS. www.terriford-art.com.

CLARK MITCHELL pastel workshops—PSWC DP clark@cgmitchell.com

BILL HOSNER PSWC-DP, MASTER PASTELIST, Three Seminars, Three Opportunities to work with Master Plein Air Painter William Truman Hosner. For details and dates: www.williamhosner.com

BOB GERBRACHT, PSWC Pastel Laureate™. Workshops Pastels & Oils: Portrait & Figure.. Website: bob-gerbracht.com Bob Gerbracht: call 510 741-8518 or email bgerbracht@sbcglobal.net

ALBERT HANDELL—PSA Hall of Fame, PSWC Pastel Laureate.™ Contact him at 505-983-8383, and ask for Virginia Stark, or write to P. O. Box 9070, Santa Fe, NM, 87504-9070, or go to the website at www.alberthandell.com; or email alberthandell@msn.com. Please view his website to read about his new Paint-A-Long Mentoring Program.

LESLIE HARRISON, For complete workshop information, please visit her Web site at www.harrison-keller.com. You can now sign up online and pay by credit card. Or call 209-419-3122.

COLLEEN HOWE View examples of her work and check her calendar at www.colleenhowe.com. Please contact Colleen with questions at 801-502-4588 or ckhartist@aol.com.

RICHARD MCKINLEY, PSWC Pastel Laureate™, PSA Hall of Fame. See www.mckinleystudio.com for 2015 workshops.

MARGOT SCHULZKE, PSWC Pastel Laureate™. Oregon Workshop: Emerald Art Center, Springfield Oregon, 3 days, Sept. 21-23, 2015. Details, contact Margot, designinart@gmail.com. Margot's classes emphasize fine design and nurture keen drawing skills, with lively, interactive discussions and individualized help. Join us and stretch your mind as well as your skills. 8 week sessions. Wednesdays; first hour is discussion/demos/critiques; 2nd and 3rd hours individual instruction at the easel. All painting media welcome. www.margotschulzke.com or for details, At The Newcastle Sheds Gallery and Studios, Newcastle CA. Contact designinart@gmail.com or call 530-878-7510.

LIZ HAYWOOD-SULLIVAN is offering a workshop in August, 2015, in Morro Bay, with 2 days of studio work at the Morro Bay Art Gallery and 2 days of painting en plein air. This will be the first time Liz has done a West Coast workshop and it will fill up quickly. Attached is a registration form with all the information. Anyone with questions can contact K C Caldwell directly at (805) 540-1470, or by emailing her at fogcatchers@gmail.com.

Please send workshop notices separately to the editor of the newsletter, at newsletter@pswc.us To be published, the words "workshop calendar" should be on the subject line. Thank you.

The Board of PSWC expresses deep appreciation to **MARIA SYLVESTER**, who served as a member of this board for some twenty years, serving as president of the society for one term and the rest of the time as our amazing, top-drawer Publications Chair. She produced our handsome open show catalogs and did our layouts for this newsletter, among other things. She has retired from the board to teach art full-time at Del Oro High School, which has one of the best high school art departments in Northern California. They are delighted to have her there.

We also welcome **MARIANNE HARRIS**, a professional layout artist who is stepping in as PSWC Publications Designer. We are very grateful to have her join us. We know she will do honors to the role!

We also thank **JANIE HUTCHISON** for her long-term editor of the *Feature Artist E-blast* featuring member artists on Constant Contact.

As always, thank you to our web designer, **DIANE BLAKLEY**, who does a great job keeping the site up to date. It's classy, informative, and up to the minute.

Likewise to **LINDA ROEMISCH**, PSWC's Website coordinator and Ways and Means Chair, who does a remarkable job of piling up awards for the open show.

**Anfangen ist leicht,
beharren eine Kunst.**

*To begin is easy,
to persist is art.*

—German proverb

Members no longer need a password to get into the newsletters and the members listing page on the website.

Maintaining Signature or DP status requires continued payment of dues no later than May 1 each year. Restoring member status requires starting over, not just paying back dues: Attaining Signature status requires acceptance in three Pastels USA Open Exhibitions, or alternatively, acceptance in two Pastels USA shows plus a place award in one PSWC (General) Membership Show.

PSWC is the largest pastel society outside New York. – Please keep telling your friends about PSWC. Although our members are concentrated primarily on the West Coast, our members hail from all over the United States and beyond.

PSWC and PSWC-DP are signatures that matter. To win **Distinguished Pastellist** standing, artists must win three awards in Pastels USA in no more than a **five-year period**. We believe PSWC has the **most rigorous standard for upper-level distinction in any major pastel society**; once attained, you probably will not want to lose it. We have noticed when an artist's pastel society membership status is listed in magazines, ads, etc, apart from PSA, PSWC is the most frequently mentioned.

Reasonable dues: PSWC membership is a bargain (see below!), and we are proud to provide our beautiful *Pastels USA catalog* **free of charge** to all who attend Pastels USA or whose work is accepted in the show.

Take Advantage of PSWC's Online Gallery

Go to <http://pswc.ws/html/galleries.html> and click on *How to apply for an Artist Gallery Web Page*.

Have you posted your works on our **Member Gallery Website**? Please log on and go to the Members Link page for full details: http://pswc.ws/html/artist_gallery.html.

We offer the "PayPal" payment option for both Membership and the Member's Gallery.

Please log on and download the instructions under the Members' Link page http://www.pswc.ws/html/artist_gallery.html. For those who have already posted your art, this is the time you may want to update and renew your gallery page. Our Members Link page is a wonderful place to view and get to know our fellow members' artwork.

Website Addresses • Existing sites are listed at PSWC website

More you will want to know about the website:

Our **Members Roster** lists members' names, city and state only; no street or email addresses are listed, to protect your privacy. The listing will allow you to reach other PSWC members within your local area. It also includes all local exhibit patrons.



PASTEL SOCIETY
OF THE WEST COAST

PRESIDENT: Russell Frank frankpastels@gmail.com, info@pswc.ws
VICE PRESIDENT & EXHIBITION CHAIR: Tina Moore, 209-931-2529
RECORDING SEC: Marie Gonzales Mgonzo1203@gmail.com
TREASURER: David Kalbach, kalbachd@comcast.net , 916/988-5551
PASTELS USA CHAIR: Gerald Boyd, jerry@geraldboyd.com, 209-745-6535
NEWSLETTER EDITOR, Margot Schulzke, newsletter@pswc.ws 530-878-7510
EXHIBIT COMMITTEE: Susan Goodmundson goodmundson@sbcglobal.net
MEMBERSHIP CHAIR: Willo Balfrey wbalfrey@cot.net 530-262-7425.
WAYS AND MEANS: Linda Roemisch, artandsoul@hughes.net, 530-265-9213

ADMINISTRATIVE STAFF

EXHIBITION CO-CHAIRS: David Kalbach and Russell Frank
WEB DIRECTOR: Diane F. Blakley diane.blakley@sbcglobal.net
SCHOLARSHIPS: Co-Chairs David Kalbach and Russell Frank
PUBLICATIONS DESIGNER: Marianne Harris, www.mharrisgraphics.com

REGIONAL REPRESENTATIVES

Dianne Wyatt, Sheridan Wy. 82801; 307-5627
Peggy Nichols, Los Angeles Ca 90048 213-852-7132
Patricia Boes, Long Island City, NY 11103
Peggy Tibbs, Fresno, Ca.
Nell D. Fischer, Pickerington, Ohio
Sandy Bonney, Brookings, Or (541) 469-1085

Next Newsletter Deadline: March 1, 2015



THE PASTEL SOCIETY OF THE WEST COAST
P.O. Box 4518 • Stockton, Ca. 95204.